

IKHLAS LESTARI

Together Empowering Lives

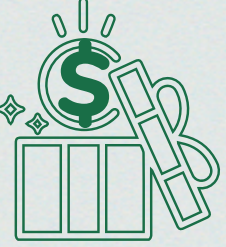




IKHLAS Lestari is an initiative by **Takaful IKHLAS** through its **IKHLAS Barakah House (IBH)**, a Shariah-compliant platform that pools funds from sources like waqaf and endowment monies, zakat, surplus, **IKHLAS Lestari** contributions, and public contributions. This initiative supports the Value-Based Intermediation for Takaful (VBIT) program and generates positive community development and sustainable living through financial assistance with five main course areas, namely education, economy, community, health and environment.

Starting in 2025, **IKHLAS Lestari** is dedicated to supporting children undergoing cancer treatment by channeling donations to hospitals that offer specialised care for children with cancer.

IKHLAS Lestari plans to expand its impact by exploring innovative solutions to address social challenges, critical environmental issues, and promote sustainable practices.

You can be part of this meaningful effort by contributing to **IKHLAS Lestari**. Let's come together and make a lasting difference in the lives of those in need.

 <p>Main Objective Raise RM150,000 to fund cancer treatment for children.</p>	 <p>Minimum Contribution RM10/month.</p>	 <p>Flexibility Support for various community initiatives in the future.</p>
-----------------------------------------------------------------------------------------------------------------------------------------------------------------------------	-----------------------------------------------------------------------------------------------------------------------------------------	------------------------------------------------------------------------------------------------------------------------------------------------------------------------------

“Allah will help His servants as long as His servants help each other”
Hadith an-Nawawi



Takaful IKHLAS is a member of PIDM. The benefits payable under eligible Takaful Certificate are protected by PIDM up to limits. Please refer to PIDM's TIPS Brochure or contact Takaful IKHLAS or PIDM at www.pidm.gov.my

We Protect Everyone

The name “**Lestari**” reflects our efforts to create a lasting and continuous positive impact on the development of **education, economy, community, health,** and the **environment.**

IKHLAS LESTARI

Sustainability in Charity

Contributions from the **IKHLAS Barakah House** fund are ongoing.

Sustainability in Protection

Takaful protection ensures your family is always protected.

A Legacy of Care

Sustainable creates a society that helps those in need.

How IKHLAS Lestari Works:

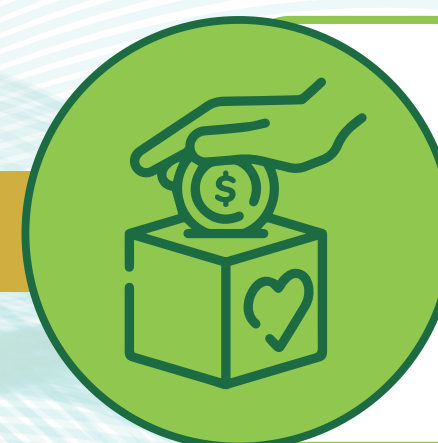
IKHLAS LESTARI



Participate any family takaful plan from **Takaful IKHLAS.**



Your contribution will be added to the pool of fund of



Add contribution as low as **RM10** per month to the **IKHLAS Lestari** plan.



The fund will be channeled to hospitals that provide cancer treatment for children.



You are protected and become part of a meaningful sustainable living effort.

Join IKHLAS Lestari today and be part of progressive change.

CONTACT OUR TAKAFUL AGENT OR ADVISORY NOW TO REGISTER

TAKAFUL IKHLAS FAMILY BERHAD (200201025412) (593075-U)

IKHLAS Point, Tower 11A, Avenue 5, Bangsar South, No. 8, Jalan Kerinchi, 59200 Kuala Lumpur
03-27239696 | ikhlascare@takaful-ikhlas.com.my | www.takaful-ikhlas.com.my

This brochure and image will remain the property of Takaful Ikhlas Family Berhad. All rights reserved. All benefits are subject to terms and conditions.

We Protect Everyone